

Construction Progress

2008

Lowering Saanenmöserstrasse
Roundabout and junction Alte Strasse
Cut-and-cover-tunnel: western part
Junction south-west (Oeystrasse)
Naturalistic design for Bortgräbli



2009

Adaptations Saanenmöserstrasse
(down to the Municipality Council)
Cut-and-cover-tunnel: eastern part



2010

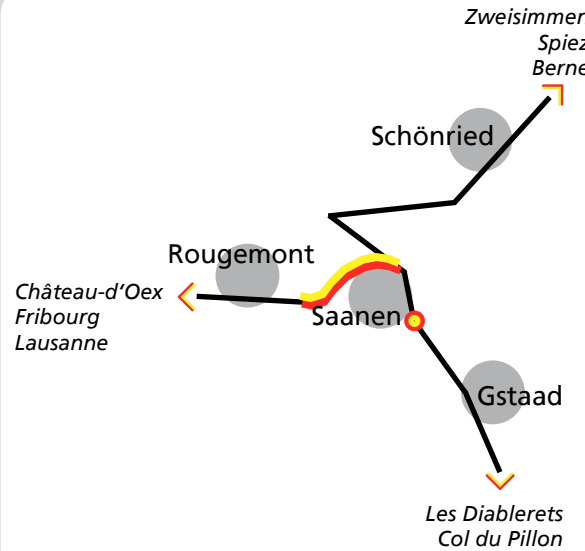
Canopy of the tunnel
Installations and signals
Adaptation of the hospital roundabout



October 2010

Opening

Overview



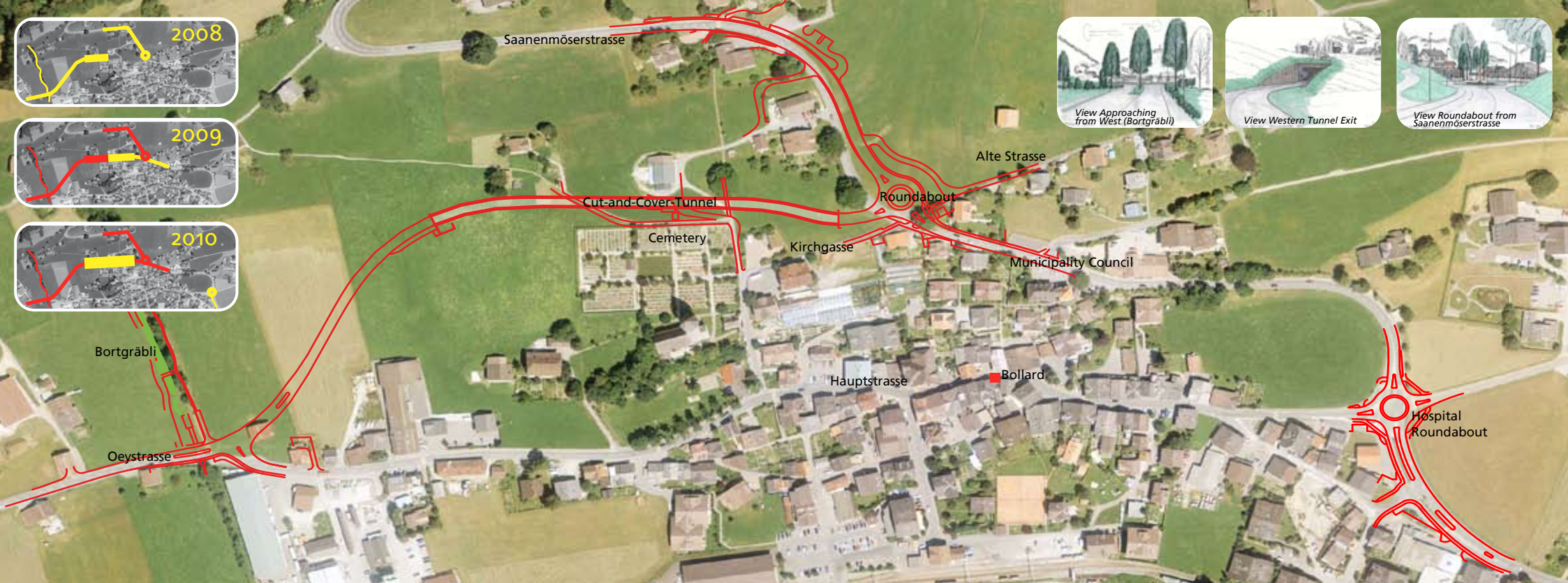
Information

www.nordumfahrungsaaenen.ch
info@nordumfahrungsaaenen.ch
SOS construction site: 079 422 75 06



Northern Bypass Saanen





The Northern Bypass >

> releases from 2010 the village of Saanen from transit traffic. It connects Saanenmöserstrasse in the north to Oeystrasse in the southwest. In the north of the cemetery a 280 meter long cut-and-cover-tunnel allows for an optimal preservation of the landscape. The Hospital roundabout is adapted for the new conditions. After the opening of the bypass, the centre of Saanen is closed to transit traffic. Additionally, the municipality plans a new design for the heart of the village.

The realisation >

> of the cut-and-cover-tunnel succeeds in the summer seasons 2008 and 2009 (April to September). The fertile soil is carefully cleared, temporarily stored and then reproduced. In order to allow its optimal connection, Saanenmöserstrasse is lowered for a length of 400 meters and linked to the bypass by a roundabout. Alte Strasse obtains a new link to Saanenmöserstrasse. Access to the Kirchgasse from the roundabout is only possible for pedestrians and bicycles.

During operations >

> generally only single-lane traffic is possible on Oeystrasse (until October 2008) and Saanenmöserstrasse (April to September 2008 and 2009). The traffic flow is regulated by temporary traffic lights. The necessary interruption of work during winter time as well as the security of the neighbourhood ask for an intense construction phase. Work starts at 5 a.m. and finishes at 10 p.m. However, particularly noisy operations only happen during regular working hours (7 a.m. - 12 p.m. and 1 p.m. - 7 p.m.). Construction work is interrupted for funerals.